



Tropical Storm Cindy

National Weather Service Houston/Galveston

LATEST INFORMATION

COORDINATES

Latitude 27.3 °N

Longitude 91.9 °W

LOCATION

225 miles from Galveston, TX

MOVEMENT

NW 8 mph

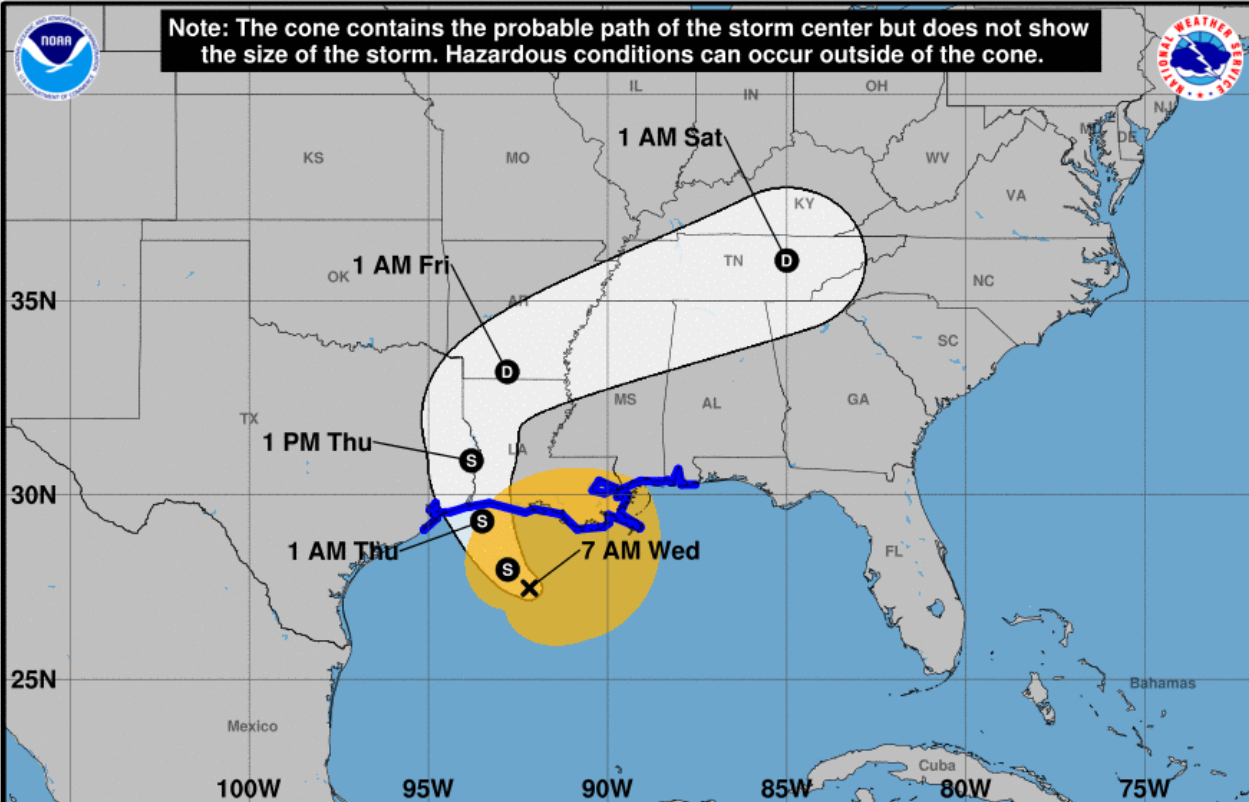
MAX SUSTAINED WINDS

60 mph

PRESSURE

9997 mb

29.44 inches



Tropical Storm Cindy
 Wednesday June 21, 2017
 7 AM CDT Intermediate Advisory 7A
 NWS National Hurricane Center

Current information: x
 Center location 27.5 N 92.2 W
 Maximum sustained wind 60 mph
 Movement NW at 8 mph

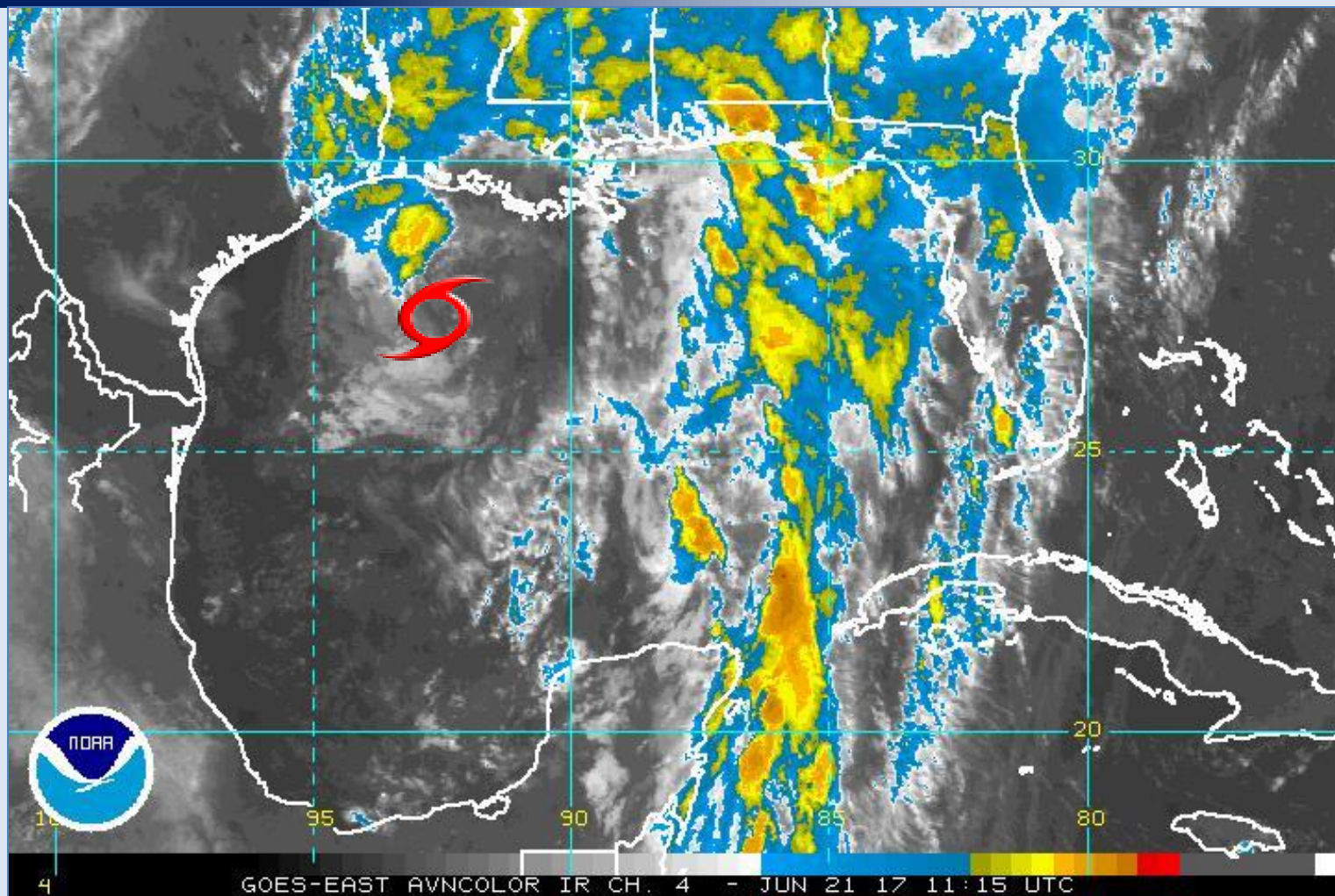
Forecast positions:
 ● Tropical Cyclone ○ Post/Potential TC
 Sustained winds: D < 39 mph
 S 39-73 mph H 74-110 mph M > 110 mph

Potential track area:	Watches:	Warnings:	Current wind extent:
Day 1-3 Day 4-5	Hurricane Trop Stm	Hurricane Trop Stm	Hurricane Trop Stm



Tropical Storm Cindy

National Weather Service Houston/Galveston



This is the latest satellite picture



@NWSHouston
weather.gov/houston

Image 6/21/2017
Created 7:40 AM

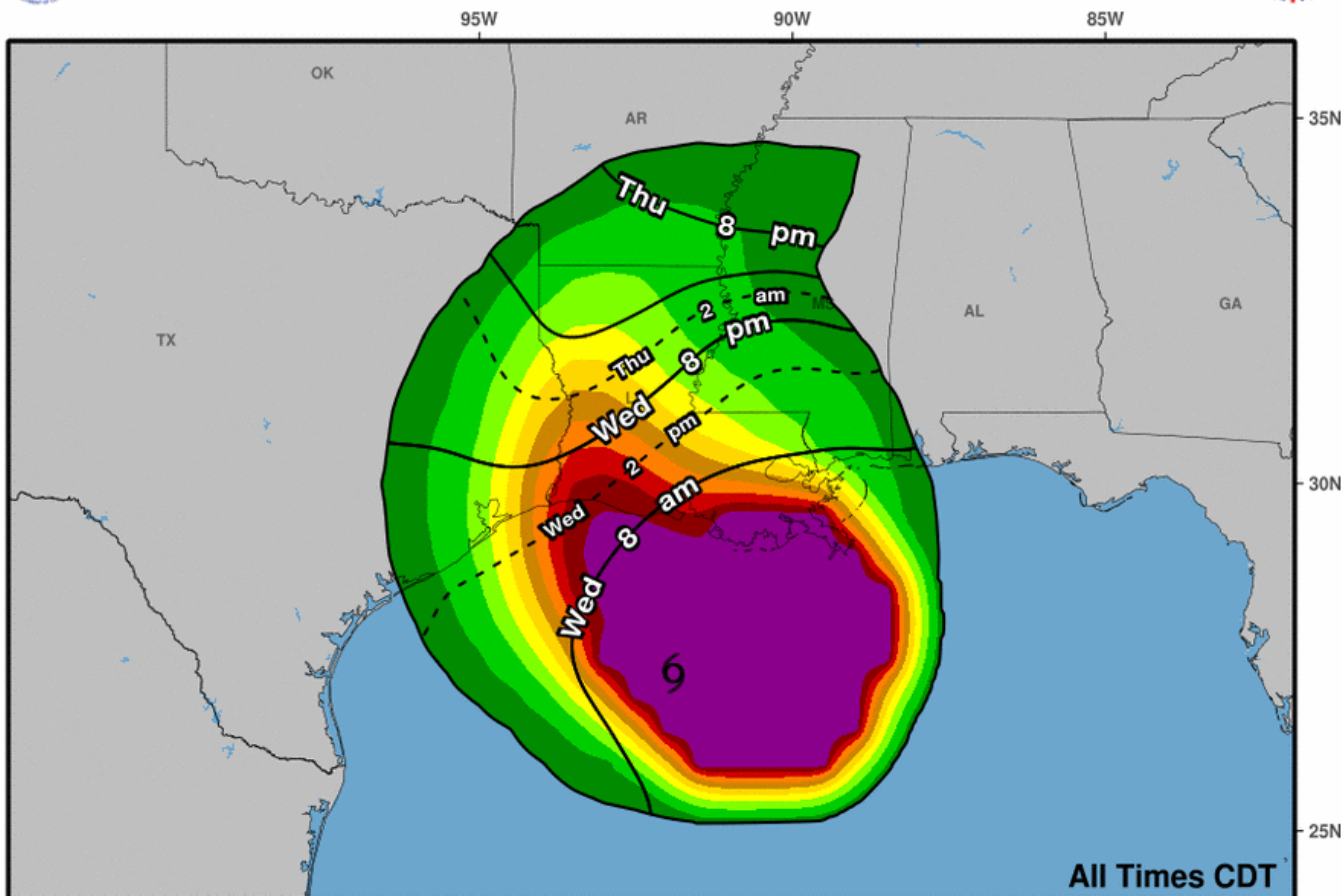


Tropical Storm Cindy

National Weather Service Houston/Galveston



Most Likely Arrival Time of Tropical-Storm-Force Winds



Tropical Storm Cindy
 Wed. Jun. 21, 2017 4 am CDT
 Advisory 7

Storm Location &
 Wind Speed (knots)
 ○ <34 ◐ 34-63 ◑ ≥64

Five-day chance of receiving sustained 34+ knot (39+ mph) winds



@NWSHouston
 weather.gov/houston

Image 6/21/2017
Created 7:40 AM

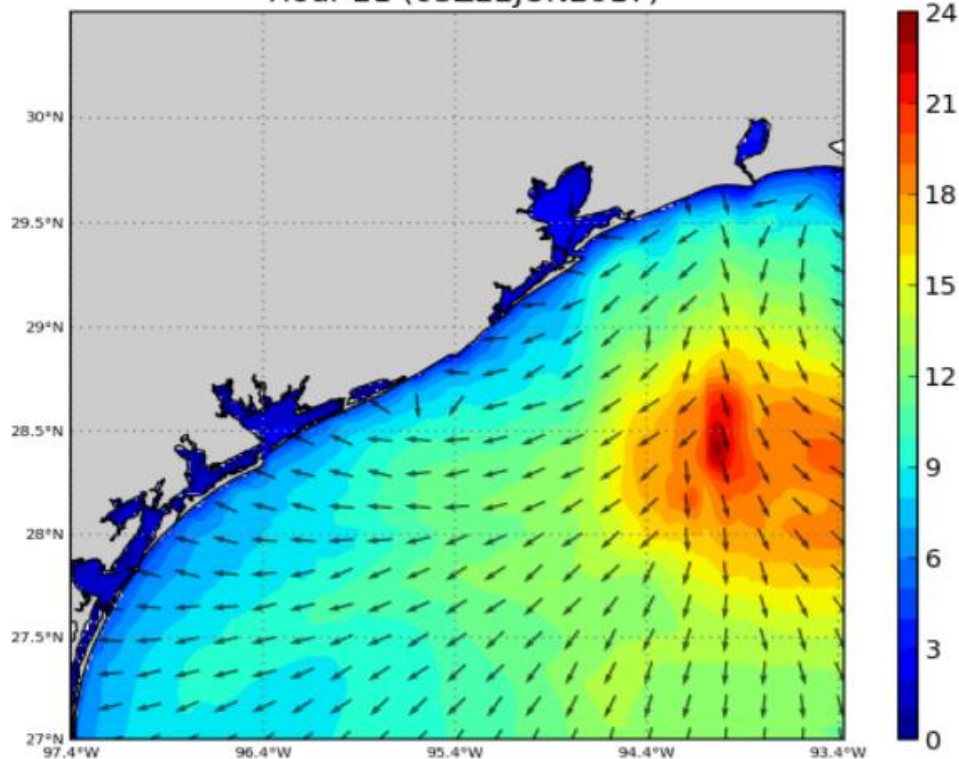


Tropical Storm Cindy

National Weather Service Houston/Galveston

Houston/Galveston, Texas

NWPS Significant Wave Height (ft) and Peak Wave Direction
Hour 21 (03Z22JUN2017)



[Project Details](#) • [Product Description](#) • [Survey](#)

Seas

- ☐ As of 7am, they're already 7 feet within 20 NM and 11 feet out to 60 NM. Expect further increases today and tonight – up to 15 feet offshore as the storm moves closer.



@NWSHouston
weather.gov/houston

Image 6/21/2017
Created 7:40 AM

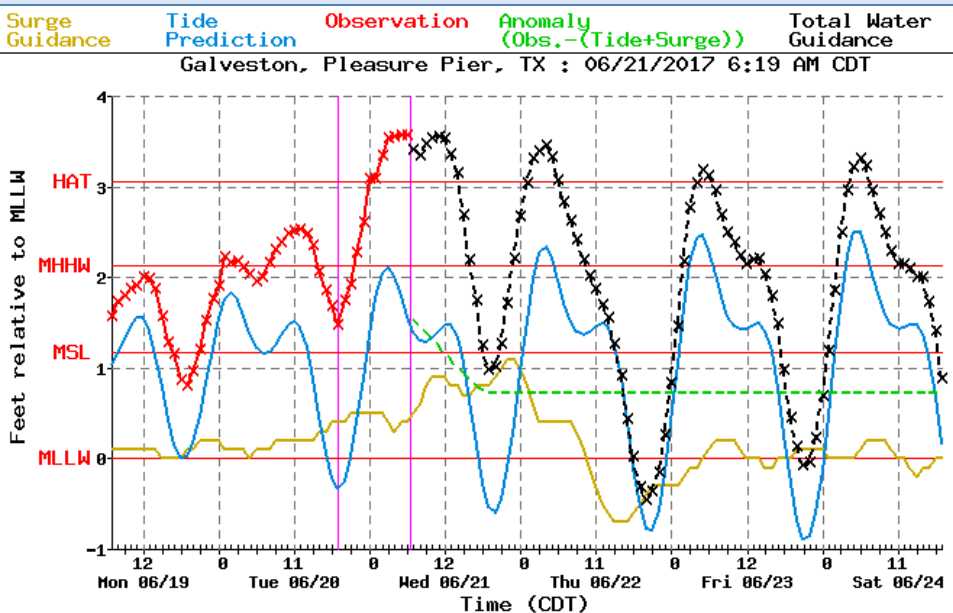


Tropical Storm Cindy

National Weather Service Houston/Galveston

Surge & Tides

- Minor coastal flooding along the beaches and at Highway 87/124 on Bolivar around times of high tide. Next high tide is around 1230pm and 430am. More significant east of High Island.



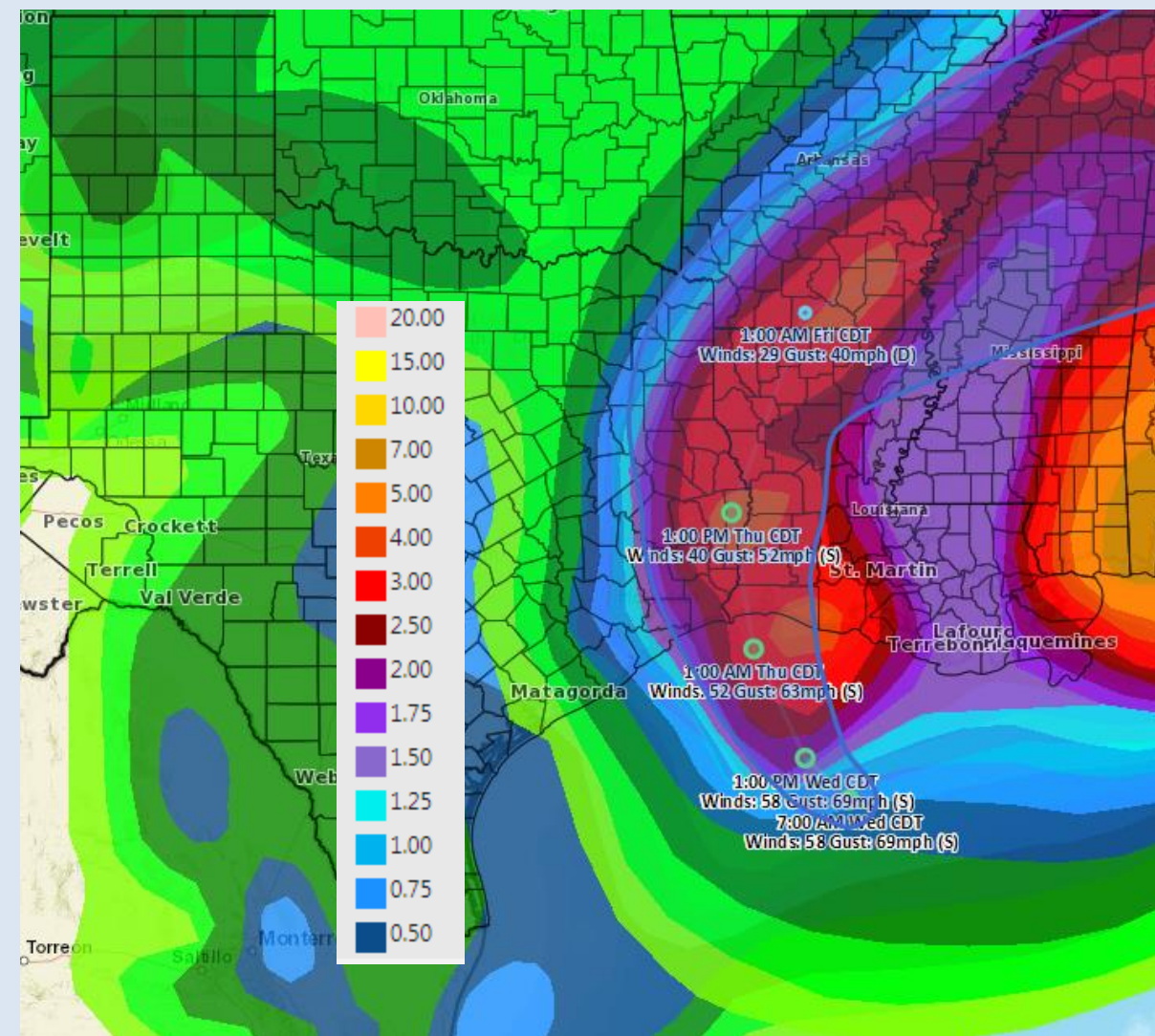
@NWSHouston
weather.gov/houston

Image 6/21/2017
Created 7:40 AM



Tropical Storm Cindy

National Weather Service Houston/Galveston



Rainfall through Saturday morning

- ❑ Rain totals have been scaled back across SE Texas and west of where the center makes landfall.
- ❑ 1 to 3 inches of rainfall is expected with isolated higher amounts possible across the far eastern portions of SE Texas.



@NWSHouston
weather.gov/houston

Image 6/21/2017
Created 7:40 AM